



Capacity / Load center  
21,800 lbs / 24 inch - 26,000 lbs / 24 inch

Voltage: 96 V

Extremely compact machine,  
ideal to handle heavy loads inside containers

# K

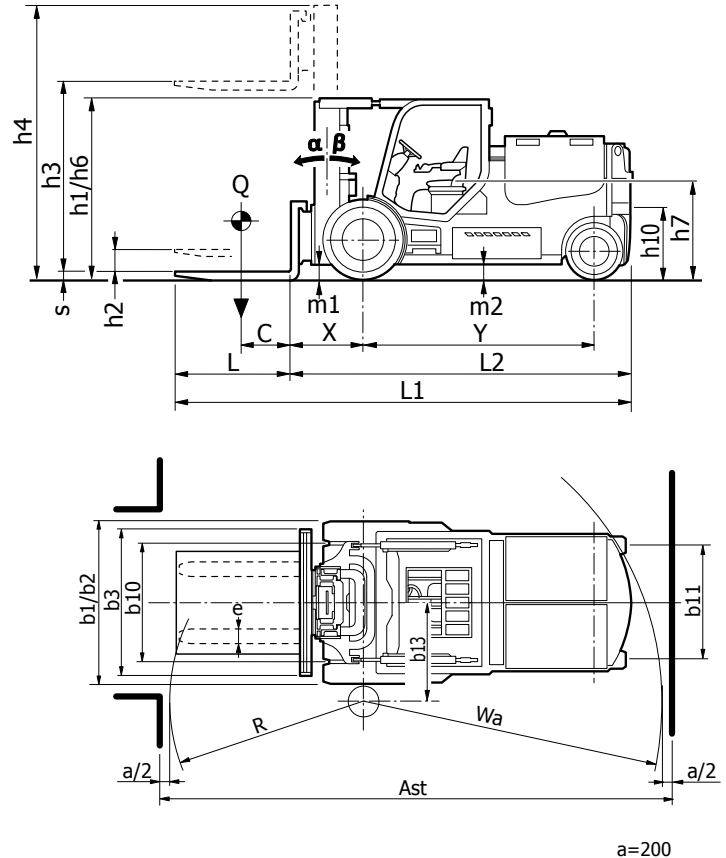
## SERIES



**K 100 ZH**  
**K 120 ZH**

## MAIN FEATURES

- Capacity / Load center:  
21,800 lbs / 24 inch - 26,000 lbs / 24 inch
- Voltage: 96 V
- Tires: super elastic twins
- Motors: AC
- Brakes: electric
- Travel speed: 7.4 mph
- Lifting speed: 65 fpm
- Battery 96 V – Maximum capacity 1714 Ah
- Multifunction display easy info (MDE)
- High positioned tilt cylinders



## THE BENEFITS OF CHOOSING CARER

Designed for handling heavy loads inside containers, the K 100-120 ZH series offers high performance and reliable manoeuvrability thanks to a system of cameras that allows to get maximum rear visibility in the difficult conditions when handling loads.

### Operator's comfort

The cabin is spacious and comfortable. The levers are easy to use. The steering column is tiltable and telescopic.

The electronic system allows to set up the parameters of operations by allowing to balance performance and autonomy of the battery for obtaining the most suitable configuration to the use and sensibility of the driver.

### Specifications

High performance AC motors



supply high torque. The power is managed electronically in this series of trucks.

Acceleration, speed and manoeuvrability are unmatched. The oil-bath brake system is used to keep lower maintenance costs and is suitable in many demanding applications.

The braking system is equipped by energy recovery, which works changing travel's direction, pushing

on brake pedal and releasing accelerator pedal. The way of braking can be adjusted to the driver's requirements. Easy and safe to drive, these machines are fitted with a sturdy axle, which ensures very accurate and smooth steering operations due to the separate steering motor and pump .



				C.A.R.E.R. Srl	
FEATURES	1.1	Manufacturer			
	1.2	Manufacturer's type designation		<b>K100ZH</b>	<b>K120ZH</b>
	1.3	Drive		electric	electric
	1.4	Operator type		seat	seat
	1.5	Load capacity/rated load	<b>Q</b> (lbs)	21800	26000
	1.6	Load center distance	<b>C</b> (inch)	24	24
	1.8	Load distance	<b>X</b> (inch)	32.7 (1) (2)	34.3 (1) (2)
	1.9	Wheelbase	<b>Y</b> (inch)	112.2	112.2
	WEIGHTS	2.1	Weight	(lbs)	33069
2.2		Axle loading, laden front / rear	(lbs)	48502 / 6614	56112 / 4273
2.3		Axle loading, unladen front / rear	(lbs)	15388 / 17681	16006 / 17924
WHEELS	3.1	Tires type		SEG	SEG
	3.2	Tire size, front		10.00-20	10.00-20
	3.3	Tire size, rear		250/15	250/15
	3.5	Wheels, number front rear (x = driven wheels)		4X/2	4X/2
	3.6	Track width, front	<b>b10</b> (inch)	57.9	57.9
	3.7	Track width, rear	<b>b11</b> (inch)	55.1	55.1
	DIMENSIONS	4.1	Tilt of mast / fork carriage forward / backward	$\alpha/\beta$ (°)	7/8 (2)
4.2		Closed mast height	<b>h1</b> (inch)	87.8	87.8
4.3		Free lift	<b>h2</b> (inch)	29.5	29.5
4.4		Lift (standard mast)	<b>h3</b> (inch)	82.7	82.7
4.5		Height, mast extended	<b>h4</b> (inch)	139.8	139.8
4.7		Height of overhead guard	<b>h6</b> (inch)	87.8	87.8
4.8		Seat height	<b>h7</b> (inch)	45.3	45.3
4.12		Coupling height	<b>h10</b> (inch)	33.9	33.9
4.19		Overall length	<b>L1</b> (inch)	209	210.6
4.20		Length to face of forks	<b>L2</b> (inch)	161.8	163.4
4.21		Overall width	<b>b1/b2</b> (inch)	78.7	78.7
4.22		Fork dimensions	<b>exsXL</b> (inch)	7.9x2.8x47.2	7.9x2.8x47.2
4.23		Fork carriage iso 2328/30, FEM/A,B		5A	CARER
4.24		Fork-carriage width	<b>b3</b> (inch)	70.9	70.9
4.31		Ground clearance, laden, below mast	<b>m1</b> (inch)	7.9	7.9
4.32		Ground clearance, center of wheelbase	<b>m2</b> (inch)	7.1	7.1
4.33		Aisle width for pallets 1000x1200 crossways	<b>Ast</b> (inch)	227.8	229.1
4.34		Aisle width for pallets 800x1200 lengthways	<b>Ast</b> (inch)	235.6	237
4.35		Turning radius	<b>Wa</b> (inch)	148.2	148.2
4.36		Internal turning radius	<b>b13</b> (inch)	55.1	55.1
PERFORMANCE	5.1	Travel speed, laden / unladen	(mph)	7.4 / 7.4	6.8 / 6.8
	5.2	Lift speed, laden / unladen	(fpm)	41.3 / 65	37.4 / 59.1
	5.3	Lowering speed, laden / unladen	(fpm)	78.7 / 68.9	78.7 / 59.1
	5.5	Drawbar pull, laden / unladen (S2 60')	(lbf)	1438.8 / 1618.6	1303.9 / 1483.7
	5.6	Max. drawbar pull, laden / unladen (S2 5')	(lbf)	3574.5 / 3754.3	3439.6 / 3619.4
	5.7	Gradeability, laden / unladen (S2 30')	(%)	5.2 / 9.8	4 / 7.9
	5.8	Max. gradeability, laden / unladen (S2 5')	(%)	8 / 14	6.5 / 12
	5.9	Acceleration time, laden / unladen (10 m)	(s)	6.5 / 6.2	7.2 / 6.8
	5.10	Service brake: mech./hydr./electr.		electric	electric
	MOTOR/ BATT.	6.1	Drive motor rating (S2 60')	(hp)	36.2
6.2		Lift motor rating (S3 20%)	(hp)	60.3	60.3
6.4		Battery voltage	<b>U</b> (V)	96	96
6.4.1		Rated capacity	<b>K6</b> (Ah)	1581 / 1714 (TENSOR)	1581 / 1714 (TENSOR)
6.5		Battery weight minimum/maximum	(lbs)	9920.8 / 10802.7	9920.8 / 10802.7
6.6		Battery physical size, maximum	(inch)	48x31.3x34.3	48x31.3x34.3
OTHERS	8.1	Type of drive control		inverter	inverter
	8.2	Operating pressure for attachments	(psi)	2320	2320
	8.4	Sound level at the driver's ear	(dBA)	-	-

(1) With side-shifter integrated in the mast.

(2) Depending on kind of mast.

Wheels tire legend: SE super elastic - SEG super elastic twins - C cushion - PN pneumatic - VLK vulkolan; for tires NO MARKING - OIL RESISTANT, please, contact CARER.

The performance data refer to a forklift truck in perfect working condition, with battery weight corresponding to the values given in 6.5.

This specification sheet provides details of the standard truck only. Non-standard tires, different masts, optional equipment, etc. may result in different values.

The CARER products and specifications are subject to change without notice.



**C.A.R.E.R. Srl**

via Copernico 13  
48033 Cotignola (RA) Italy

phone +39 0545 1938010

fax +39 0545 908070

[www.carerforklift.com](http://www.carerforklift.com)

[info@carerforklift.com](mailto:info@carerforklift.com)

follow us on 